



NER GROUP CO.,LIMITED

Yantai Bonway Manufacturer Co.,Ltd

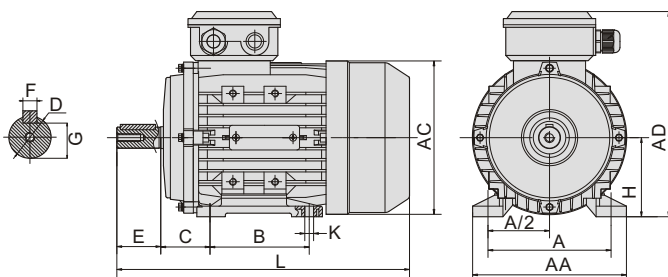


Y2 Series

THREE-PHASE ASYNCHRONOUS INDUCTION MOTOR

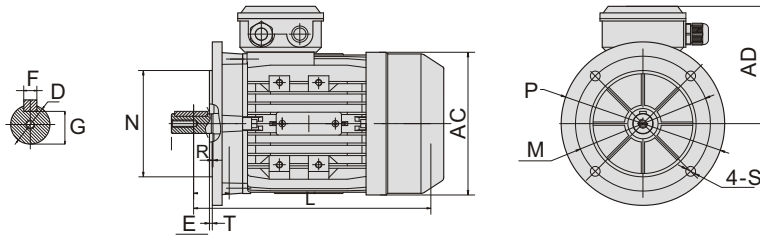


IMB3



B3 OVERALL & INSTALLATION DIMENSION

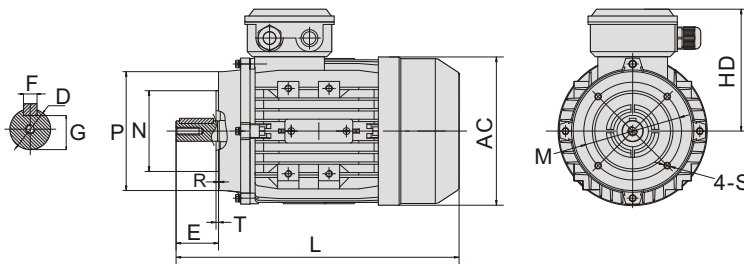
Frame	Poles	H	A	A/2	B	C	D	E	F	G	K	AA	AD	AC	L
71**	2, 4, 6, 8	71	112	56	90	45	φ 14	30	5	11	7X10	132	188/180	φ 145	260
80	2, 4, 6, 8	80	125	62.5	100	50	φ 19	40	6	15.5	10X13	160	217	φ 165	295
90S	2, 4, 6, 8	90	140	70	100	56	φ 24	50	8	20	10X13	175	235	φ 185	335
90L1/L2	2, 4, 6, 8	90	140	70	125	56	φ 24	50	8	20	10X13	175	235	φ 185	365
100**	2, 4, 6, 8	100	160	80	140	63	φ 28	60	8	24	12X16	196	252	φ 205	400
112	2, 4, 6, 8	112	190	95	140	70	φ 28	60	8	24	12X16	220	292	φ 230	400
132S	2, 4, 6, 8	132	216	108	140	89	φ 38	80	10	33	12X16	252	325	φ 270	480
132M/L	2, 4, 6, 8	132	216	108	178	89	φ 38	80	10	33	12X16	252	325	φ 270	510/535
160M/L	2, 4, 6, 8	160	254	127	210/254	108	φ 42	110	12	37	15X19	290	390	φ 320	640
180M	2, 4, 6, 8	180	279	140	241	121	φ 48	110	14	42.5	15	355	455	φ 360	670
180L	2, 4, 6, 8	180	279	140	279	121	φ 48	110	14	42.5	15	355	455	φ 360	710
200L	2, 4, 6, 8	200	318	159	305	133	φ 55	110	16	49	19	375	505	φ 400	775
225S	4, 8	225	356	178	286	149	φ 60	140	18	53	19	435	560	φ 470	815
225M	2	225	356	178	311	149	φ 55	110	16	49	19	435	560	φ 470	820
225M	4, 6, 8	225	356	178	311	149	φ 60	140	18	53	19	435	560	φ 470	845
250M	2	250	406	203	349	168	φ 60	140	18	53	24	490	615	φ 510	910
250M	4, 6, 8	250	406	203	349	168	φ 65	140	18	58	24	490	615	φ 510	910
280S	2	280	457	228.5	368	190	φ 65	140	18	58	24	550	680	φ 580	985
280S	4, 6, 8	280	457	228.5	368	190	φ 75	140	20	67.5	24	550	680	φ 580	985
280M	2	280	457	228.5	419	190	φ 65	140	18	58	24	550	680	φ 580	1035
280M	4, 6, 8	280	457	228.5	419	190	φ 75	140	20	67.5	24	550	680	φ 580	1035
315S	2	315	508	254	406	216	φ 65	140	18	58	28	635	845	φ 645	1185
315S	4, 6, 8	315	508	254	406	216	φ 80	170	22	71	28	635	845	φ 645	1215
315M	2	315	508	254	457	216	φ 65	140	18	58	28	635	845	φ 645	1295
315M	4, 6, 8	315	508	254	457	216	φ 80	170	22	71	28	635	845	φ 645	1325
315L	2	315	508	254	508	216	φ 65	140	18	58	28	635	845	φ 645	1295
315L	4, 6, 8	315	508	254	508	216	φ 80	170	22	71	28	635	845	φ 645	1325
355M	2	355	610	305	560	254	φ 75	140	20	67.5	28	730	1010	φ 710	1500
355M	4, 6, 8	355	610	305	560	254	φ 95	170	25	86	28	730	1010	φ 710	1530
355L	2	355	610	305	630	254	φ 75	140	20	67.5	28	730	1010	φ 710	1500
355L	4, 6, 8	355	610	305	630	254	φ 95	170	25	86	28	730	1010	φ 710	1530



B5 OVERALL & INSTALLATION DIMENSION

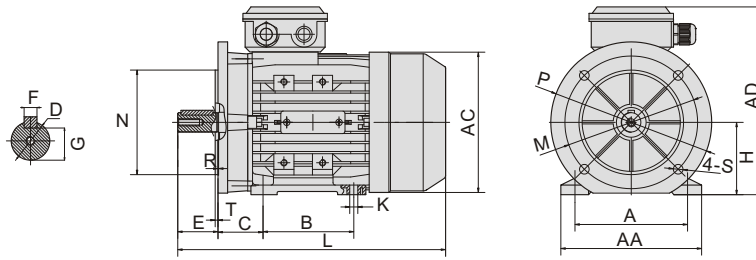
Frame	Poles	M	N	P	T	S	D	E	F	G	AC	AD	L
71**	2, 4, 6, 8	φ130	φ110	φ160	3.5	φ10	φ14	30	5	11	φ145	117/109	260
80	2, 4, 6, 8	φ165	φ130	φ200	3.5	φ12	φ19	40	6	15.5	φ165	137	295
90S	2, 4, 6, 8	φ165	φ130	φ200	3.5	φ12	φ24	50	8	20	φ185	145	335
90L1/L2	2, 4, 6, 8	φ165	φ130	φ200	3.5	φ12	φ24	50	8	20	φ185	145	365
100**	2, 4, 6, 8	φ215	φ180	φ250	4.0	φ15	φ28	60	8	24	φ205	152	400
112	2, 4, 6, 8	φ215	φ180	φ250	4.0	φ15	φ28	60	8	24	φ230	180	400
132S	2, 4, 6, 8	φ265	φ230	φ300	4.0	φ15	φ38	80	10	33	φ270	193	480
132M/L	2, 4, 6, 8	φ265	φ230	φ300	4.0	φ15	φ38	80	10	33	φ270	193	510/535
160M/L	2, 4, 6, 8	φ300	φ250	φ350	5.0	φ19	φ42	110	12	37	φ320	230	640
180M	2, 4, 6, 8	φ300	φ250	φ350	5.0	φ19	φ48	110	14	42.5	φ380	180	670
180L	2, 4, 6, 8	φ350	φ300	φ400	5.0	φ19	φ55	110	16	49	φ420	180	710
200L	2, 4, 6, 8	φ350	φ300	φ400	5.0	φ19	φ55	110	16	49	φ400	280	775
225S	4, 8	φ400	φ350	φ450	5.0	φ19	φ60	140	18	53	φ470	305	815
225M	2	φ400	φ350	φ450	5.0	φ19	φ55	110	16	49	φ470	335	820
225M	4, 6, 8	φ400	φ350	φ450	5.0	φ19	φ60	140	18	53	φ470	335	845
250M	2	φ500	φ450	φ550	5.0	φ19	φ60	140	18	53	φ510	370	910
	4, 6, 8	φ500	φ450	φ550	5.0	φ19	φ65	140	18	58	φ510	370	910
280S	2	φ500	φ450	φ550	5.0	φ19	φ65	140	18	58	φ580	410	985
	4, 6, 8	φ500	φ450	φ550	5.0	φ19	φ75	140	20	67.5	φ580	410	985
280M	2	φ500	φ450	φ550	5.0	φ19	φ65	140	18	58	φ580	410	1035
	4, 6, 8	φ500	φ450	φ550	5.0	φ19	φ75	140	20	67.5	φ580	410	1035

** : This frame size has two housing size, the rated output is for normal "L" size, and increased output is for the bigger "L" size (refer to the figures in the bracket "()")



B14 OVERALL & INSTALLATION DIMENSION

Frame	B14							B14B							D	E	F	G	KK	AC	HD	L
	N	M	P	T	S	R	N	M	P	T	S	R										
71**	φ70	φ85	φ105	2.5	M6	0								φ14	30	5	11	1-M20X1.5	φ145	117/109	260	
80	φ80	φ100	φ120	3.0	M6	0	φ110	φ130	φ160	3.5	M8			φ19	40	6	15.5	1-M20X1.5	φ165	137	295	
90S	φ95	φ115	φ140	3.0	M8	0	φ110	φ130	φ160	3.5	M8	φ0		φ24	50	8	20	1-M20X1.5	φ185	145	335	
90L1/L2	φ95	φ115	φ140	3.0	M8	0	φ110	φ130	φ160	3.5	M8	φ0		φ24	50	8	20	1-M20X1.5	φ185	145	365	
100**	φ110	φ130	φ160	3.5	M8	0	φ130	φ165	φ200	3.5	M10	φ0		φ28	60	8	24	1-M20X1.5	φ205	152	400	
112	φ110	φ130	φ160	3.5	M8	0	φ130	φ165	φ200	3.5	M10	φ0		φ28	60	8	24	2-M25X1.5	φ230	180	400	
132S	φ130	φ165	φ200	3.5	M10	0	φ180	φ215	φ250	4.0	M12	φ0		φ38	80	10	33	2-M25X1.5	φ270	193	480	
132M/L	φ130	φ165	φ200	3.5	M10	0	φ180	φ215	φ250	4.0	M12	φ0		φ38	80	10	33	2-M25X1.5	φ270	193	510/535	



B35 OVERALL & INSTALLATION DIMENSION

Frame	Poles	H	M	N	P	T	S	A	B	C	D	E	F	G
71**	2, 4, 6, 8	71	φ110	φ130	φ160	3.5	φ10	112	90	45	φ14	30	5	11
80	2, 4, 6, 8	80	φ130	φ165	φ200	3.5	φ12	125	100	50	φ19	40	6	15.5
90S	2, 4, 6, 8	90	φ130	φ165	φ200	3.5	φ12	140	100	56	φ24	50	8	20
90L1/L2	2, 4, 6, 8	90	φ130	φ165	φ200	3.5	φ12	140	125	56	φ24	50	8	20
100**	2, 4, 6, 8	100	φ180	φ215	φ250	4.0	φ15	160	140	63	φ28	60	8	24
112	2, 4, 6, 8	112	φ180	φ215	φ250	4.0	φ15	190	140	70	φ28	60	8	24
132S	2, 4, 6, 8	132	φ230	φ265	φ300	4.0	φ15	216	140	89	φ38	80	10	33
132M/L	2, 4, 6, 8	132	φ230	φ265	φ300	4.0	φ15	216	178	89	φ38	80	10	33
160M/L	2, 4, 6, 8	160	φ250	φ300	φ350	5.0	φ19	254	210/254	108	φ42	110	12	37
180M	2, 4, 6, 8	180	φ300	φ250	φ350	5.0	φ19	279	241	121	φ48	110	14	42.5
180L	2, 4, 6, 8	180	φ300	φ250	φ350	5.0	φ19	279	279	121	φ48	110	14	42.5
200L	2, 4, 6, 8	200	φ350	φ300	φ400	5.0	φ19	318/	305	133	φ55	110	16	49
225S	4, 8	225	φ400	φ350	φ450	5.0	φ19	356	286	149	φ60	140	18	53
225M	2	225	φ400	φ350	φ450	5.0	φ19	356	311	149	φ55	110	16	49
225M	4, 6, 8	225	φ400	φ350	φ450	5.0	φ19	356	311	149	φ60	140	18	53
250M	2	250	φ500	φ450	φ550	5.0	φ19	406	349	168	φ60	140	18	49
	4, 6, 8	250	φ500	φ450	φ550	5.0	φ19	406	349	168	φ65	140	18	58
280S	2	280	φ500	φ450	φ550	5.0	φ19	457	368	190	φ65	140	18	58
	4, 6, 8	280	φ500	φ450	φ550	5.0	φ19	457	368	190	φ75	140	20	68
280M	2	280	φ500	φ450	φ550	5.0	φ19	457	419	190	φ65	140	18	58
	4, 6, 8	280	φ500	φ450	φ550	5.0	φ19	457	419	190	φ75	140	20	68
315S	2	315	φ600	φ550	φ660	6.0	φ24	508	406	216	φ65	140	18	58
	4, 6, 8	315	φ600	φ550	φ660	6.0	φ24	508	406	216	φ80	170	22	71
315M	2	315	φ600	φ550	φ660	6.0	φ24	508	457	216	φ65	140	18	58
	4, 6, 8	315	φ600	φ550	φ660	6.0	φ24	508	457	216	φ80	170	22	71
315L	2	315	φ600	φ550	φ660	6.0	φ24	508	508	216	φ65	140	18	58
	4, 6, 8	315	φ600	φ550	φ660	6.0	φ24	508	508	216	φ80	170	22	71
355M	2	355	φ740	φ680	φ800	6.0	φ24	610	560	254	φ75	140	20	68
	4, 6, 8	355	φ740	φ680	φ800	6.0	φ24	610	560	254	φ95	170	25	86
355L	2	355	φ740	φ680	φ800	6.0	φ24	610	630	254	φ75	140	20	68
	4, 6, 8	355	φ740	φ680	φ800	6.0	φ24	610	630	254	φ95	170	25	86

Frame	Poles	K	AA	AD	AC	L
71**	2, 4, 6, 8	7X10	132	188/180	φ145	260
80	2, 4, 6, 8	10X13	160	217	φ165	295
90S	2, 4, 6, 8	10X13	175	235	φ185	335
90L1/L2	2, 4, 6, 8	10X13	175	235	φ185	365
100**	2, 4, 6, 8	10X13	196	252	φ205	400
112	2, 4, 6, 8	12X16	220	292	φ230	400
132S	2, 4, 6, 8	12X16	252	325	φ270	480
132M/L	2, 4, 6, 8	12X16	252	325	φ270	510/535
160M/L	2, 4, 6, 8	15X19	290	290	φ320	640
180M	2, 4, 6, 8	φ15	355	455	φ360	670
180L	2, 4, 6, 8	φ15	355	455	φ360	710
200L	2, 4, 6, 8	φ19	375	505	φ400	775
225S	4, 8	φ19	435	560	φ470	815
225M	2	φ19	435	560	φ470	820
225M	4, 6, 8	φ19	435	560	φ470	845
250M	2	φ24	490	615	φ510	910
	4, 6, 8	φ24	490	615	φ510	910
280S	2	φ24	550	680	φ580	985
	4, 6, 8	φ24	550	680	φ580	985
280M	2	φ24	550	680	φ580	1035
	4, 6, 8	φ24	550	680	φ580	1035
315S	2	φ28	635	845	φ645	1185
	4, 6, 8	φ28	635	845	φ645	1215
315M	2	φ28	635	845	φ645	1295
	4, 6, 8	φ28	635	845	φ645	1325
315L	2	φ28	635	845	φ645	1295
	4, 6, 8	φ28	635	845	φ645	1325
355M	2	φ28	730	1010	φ710	1500
	4, 6, 8	φ28	730	1010	φ710	1530
355L	2	φ28	730	1010	φ710	1500
	4, 6, 8	φ28	730	1010	φ710	1530

TECHNICAL DATA AT 380V 50Hz

Model	Output		Speed (r/min)	Voltage (V)	Current (A)	Power Factor	Eff (%)	Tstart/Tn	Ist/In	Tmax/Tn	Tmin/Tn
	kW	HP									
2 poles											
Y2-711-2	0.37	0.50	2800	380	0.99	0.81	70.0	2.2	6.1	2.2	1.6
Y2-712-2	0.55	0.75	2800	380	1.44	0.82	71.0	2.2	6.1	2.3	1.6
Y2-801-2	0.75	1	2825	380	1.90	0.83	72.1	2.2	6.1	2.3	1.5
Y2-802-2	1.1	1.5	2825	380	2.65	0.84	75.0	2.2	7.0	2.3	1.5
Y2-90S-2	1.5	2	2840	380	3.51	0.84	77.2	2.2	7.0	2.3	1.5
Y2-90L-2	2.2	3	2840	380	4.93	0.85	79.7	2.2	7.0	2.3	1.4
Y2-100L-2	3	4	2880	380	6.43	0.87	81.5	2.2	7.5	2.3	1.4
Y2-112M-2	4	5.5	2890	380	8.31	0.88	83.1	2.2	7.5	2.3	1.4
Y2-132S1-2	5.5	7.5	2900	380	11.2	0.88	84.7	2.2	7.5	2.3	1.2
Y2-132S2-2	7.5	10	2900	380	15.1	0.88	86.0	2.2	7.5	2.3	1.2
Y2-160M1-2	11	15	2930	380	21.4	0.89	87.6	2.2	7.5	2.3	1.2
Y2-160M2-2	15	20	2930	380	28.9	0.89	88.7	2.2	7.5	2.3	1.2
Y2-160L-2	18.5	25	2930	380	35.0	0.90	89.3	2.2	7.5	2.3	1.1
Y2-180M-2	22	30	2940	380	41.3	0.90	89.9	2.0	7.5	2.3	1.1
Y2-200L1-2	30	40	2950	380	55.8	0.90	90.7	2.0	7.5	2.3	1.1
Y2-200L2-2	37	50	2950	380	68.5	0.90	91.2	2.0	7.5	2.3	1.1
Y2-225M-2	45	60	2950	380	82.8	0.90	91.7	2.0	7.5	2.3	1.0
Y2-250M-2	55	75	2950	380	100.8	0.90	92.1	2.0	7.5	2.3	1.0
Y2-280S-2	75	100	2950	380	136.6	0.90	92.7	2.0	7.5	2.3	0.9
Y2-280M-2	90	125	2950	380	161.6	0.91	93.0	2.0	7.5	2.3	0.9
Y2-315S-2	110	150	2950	380	196.9	0.91	93.3	1.8	7.1	2.2	0.9
Y2-315M-2	132	180	2950	380	235.7	0.91	93.5	1.8	7.1	2.2	0.9
Y2-315L1-2	160	220	2950	380	281.7	0.92	93.8	1.8	7.1	2.2	0.9
Y2-315L2-2	200	270	2950	380	351.4	0.92	94.0	1.8	7.1	2.2	0.8
Y2-355M-2	250	340	2950	380	439.2	0.92	94.0	1.6	7.1	2.2	0.8
Y2-355L-2	315	420	2950	380	553.4	0.92	94.0	1.6	7.1	2.2	0.8
4 poles											
Y2-711-4	0.25	0.33	1400	380	0.79	0.74	65.0	2.1	5.2	2.2	1.7
Y2-712-4	0.37	0.50	1400	380	1.12	0.75	67.0	2.1	5.2	2.2	1.7
Y2-801-4	0.55	0.75	1390	380	1.57	0.75	71.0	2.4	5.2	2.3	1.7
Y2-802-4	0.75	1	1390	380	2.08	0.76	72.1	2.3	6.0	2.3	1.6
Y2-90S-4	1.1	1.5	1400	380	2.89	0.77	75.0	2.3	6.0	2.3	1.6
Y2-90L-4	1.5	2	1400	380	3.74	0.79	77.2	2.3	6.0	2.3	1.6
Y2-100L1-4	2.2	3	1420	380	5.18	0.81	79.7	2.3	7.0	2.3	1.5
Y2-100L2-4	3	4	1420	380	6.82	0.82	81.5	2.3	7.0	2.3	1.5
Y2-112M-4	4	5.5	1440	380	8.92	0.82	83.1	2.3	7.0	2.3	1.5
Y2-132S-4	5.5	7.5	1440	380	11.9	0.83	84.7	2.3	7.0	2.3	1.4
Y2-132M-4	7.5	10	1440	380	15.8	0.84	86.0	2.3	7.0	2.3	1.4
Y2-160M-4	11	15	1460	380	22.7	0.84	87.6	2.2	7.0	2.3	1.4
Y2-160L-4	15	20	1460	380	30.2	0.85	88.7	2.2	7.5	2.3	1.4
Y2-180M-4	18.5	25	1470	380	36.6	0.86	89.3	2.2	7.5	2.3	1.2
Y2-180L-4	22	30	1470	380	43.2	0.86	89.9	2.2	7.5	2.3	1.2
Y2-200L-4	30	40	1480	380	58.4	0.86	90.7	2.2	7.2	2.3	1.2
Y2-225S-4	37	50	1480	380	70.9	0.87	91.2	2.2	7.2	2.3	1.2
Y2-225M-4	45	60	1480	380	85.7	0.87	91.7	2.2	7.2	2.3	1.1
Y2-250M-4	55	75	1480	380	104.3	0.87	92.1	2.2	7.2	2.3	1.1
Y2-280S-4	75	100	1480	380	141.3	0.87	92.7	2.2	7.2	2.3	1.0
Y2-280M-4	90	125	1480	380	169.0	0.87	93.0	2.2	7.2	2.3	1.0
Y2-315S-4	110	150	1480	380	203.6	0.88	93.3	2.1	6.9	2.2	1.0
Y2-315M-4	132	180	1480	380	243.8	0.88	93.5	2.1	6.9	2.2	1.0
Y2-315L1-4	160	220	1480	380	291.2	0.89	93.8	2.1	6.9	2.2	1.0
Y2-315L2-4	200	270	1480	380	363.2	0.89	94.0	2.1	6.9	2.2	0.9
Y2-355M-4	250	340	1480	380	449.0	0.90	94.0	2.1	6.9	2.2	0.9
Y2-355L-4	315	420	1480	380	565.7	0.90	94.0	2.1	6.9	2.2	0.8

TECHNICAL DATA AT 380V 50Hz

Model	Output		Speed (r/min)	Voltage (V)	Current (A)	Power Factor	Eff (%)	Tstart/Tn	Ist/In	Tmax/Tn	Tmin/Tn
	kW	HP									
6 poles											
Y2-711-6	0.18	0.24	900	380	0.74	0.66	56.0	1.9	4.0	2.0	1.5
Y2-712-6	0.25	0.33	900	380	0.95	0.68	59.0	1.9	4.0	2.0	1.5
Y2-801-6	0.37	0.5	900	380	1.30	0.70	62.0	1.9	4.7	2.0	1.5
Y2-802-6	0.55	0.75	900	380	1.79	0.72	65.0	1.9	4.7	2.1	1.5
Y2-90S-6	0.75	1	910	380	2.26	0.72	70.0	2.0	5.5	2.1	1.5
Y2-90L-6	1.1	1.5	910	380	3.14	0.73	72.9	2.0	5.5	2.1	1.3
Y2-100L-6	1.5	2	940	380	4.04	0.75	75.2	2.0	5.5	2.1	1.3
Y2-112M-6	2.2	3	940	380	5.66	0.76	77.7	2.0	6.5	2.1	1.3
Y2-132S-6	3	4	960	380	7.53	0.76	79.7	2.1	6.5	2.1	1.3
Y2-132M1-6	4	5.5	960	380	9.82	0.76	81.4	2.1	6.5	2.1	1.3
Y2-132M2-6	5.5	7.5	960	380	13.1	0.77	83.1	2.1	6.5	2.1	1.3
Y2-160M-6	7.5	10	970	380	17.5	0.77	84.7	2.0	6.5	2.1	1.3
Y2-160L-6	11	15	970	380	24.8	0.78	86.4	2.0	6.5	2.1	1.2
Y2-180L-6	15	20	970	380	32.1	0.81	87.7	2.0	7.0	2.1	1.2
Y2-200L1-6	18.5	25	970	380	39.2	0.81	88.6	2.1	7.0	2.1	1.2
Y2-200L2-6	22	30	970	380	45.1	0.83	89.2	2.1	7.0	2.1	1.2
Y2-225M-6	30	40	970	380	60.2	0.84	90.2	2.0	7.0	2.1	1.2
Y2-250M-6	37	50	970	380	72.0	0.86	90.8	2.1	7.0	2.1	1.2
Y2-280S-6	45	60	970	380	87.0	0.86	91.4	2.1	7.0	2.0	1.1
Y2-280M-6	55	75	970	380	105.7	0.86	91.9	2.1	7.0	2.0	1.1
Y2-315S-6	75	100	970	380	143.1	0.86	92.6	2.0	7.0	2.0	1.0
Y2-315M-6	90	125	970	380	171.2	0.86	92.9	2.0	7.0	2.0	1.0
Y2-315L1-6	110	150	970	380	208.3	0.86	93.3	2.0	6.7	2.0	1.0
Y2-315L2-6	132	180	970	380	246.6	0.87	93.5	2.0	6.7	2.0	1.0
Y2-355M1-6	160	220	970	380	294.5	0.88	93.8	1.9	6.7	2.0	1.0
Y2-355M2-6	200	270	970	380	367.4	0.88	94.0	1.9	6.7	2.0	0.9
Y2-355L-6	250	340	970	380	459.2	0.88	94.0	1.9	6.7	2.0	0.9
8 poles											
Y2-801-8	0.18	0.25	630	380	0.88	0.61	51.0	1.8	3.3	1.9	1.3
Y2-802-8	0.25	0.34	640	380	1.15	0.61	54.0	1.8	3.3	1.9	1.3
Y2-90S-8	0.37	0.50	660	380	1.49	0.61	62.0	1.8	4.0	1.9	1.3
Y2-90L-8	0.55	0.75	660	380	2.17	0.61	63.0	1.8	4.0	2.0	1.3
Y2-100L1-8	0.75	1	690	380	2.40	0.67	71.0	1.8	4.0	2.0	1.3
Y2-100L2-8	1.1	1.5	690	380	3.32	0.69	73.0	1.8	5.0	2.0	1.2
Y2-112M-8	1.5	2	680	380	4.40	0.69	75.0	1.8	5.0	2.0	1.2
Y2-132S-8	2.2	3	710	380	6.04	0.71	78.0	1.8	6.0	2.0	1.2
Y2-132M-8	3.0	4	710	380	7.90	0.73	79.0	1.8	6.0	2.0	1.3
Y2-160M1-8	4.0	5.5	720	380	10.28	0.73	81.0	1.9	6.0	2.0	1.2
Y2-160M2-8	5.5	7.5	720	380	13.61	0.74	83.0	2.0	6.0	2.0	1.2
Y2-160L-8	7.5	10	720	380	17.77	0.75	85.5	2.0	6.0	2.0	1.2
Y2-180L-8	11	15	730	380	25.13	0.76	87.5	2.0	6.6	2.0	1.1
Y2-200L-8	15	20	730	380	34.08	0.76	88.0	2.0	6.6	2.0	1.1
Y2-225S-8	18.5	25	730	380	41.09	0.76	90.0	1.9	6.6	2.0	1.1
Y2-225M-8	22	30	740	380	47.35	0.78	90.5	1.9	6.6	2.0	1.1
Y2-250M-8	30	40	740	380	63.40	0.79	91.0	1.9	6.6	2.0	1.1
Y2-280S-8	37	50	740	380	77.77	0.79	91.5	1.9	6.6	2.0	1.1
Y2-280M-8	45	60	740	380	94.07	0.79	92.0	1.9	6.6	2.0	1.0
Y2-315S-8	55	75	740	380	111.17	0.81	92.8	1.8	6.6	2.0	1.0
Y2-315M-8	75	100	740	380	151.27	0.81	93.0	1.8	6.6	2.0	0.9
Y2-315L1-8	90	125	740	380	177.78	0.82	93.8	1.8	6.6	2.0	0.9
Y2-315L2-8	110	150	740	380	216.83	0.82	94.0	1.8	6.4	2.0	0.9
Y2-355M1-8	132	180	740	380	261.03	0.82	93.7	1.8	6.4	2.0	0.9
Y2-355M2-8	160	220	740	380	314.72	0.82	94.2	1.8	6.4	2.0	0.9
Y2-355L-8	200	270	740	380	387.43	0.83	94.5	1.8	6.4	2.0	0.9
10 poles											
Y2-315S-10	45	60	590	380	99.6	0.75	91.5	1.5	6.2	2.0	0.8
Y2-315M-10	55	75	590	380	121.1	0.75	92.0	1.5	6.2	2.0	0.8
Y2-315L1-10	75	100	590	380	162.1	0.76	92.5	1.5	6.2	2.0	0.8
Y2-315L2-10	90	125	590	380	191.0	0.77	93.0	1.5	6.2	2.0	0.8
Y2-355M1-10	110	150	590	380	229.9	0.78	93.2	1.3	6.0	2.0	0.8
Y2-355M2-10	132	180	590	380	275.0	0.78	93.5	1.3	6.0	2.0	0.8
Y2-355L-10	160	220	590	380	333.3	0.78	93.5	1.3	6.0	2.0	0.8

NOMINAL MINIMUM EFFICIENCIES (η) FOR IE2 EFFICIENCY LEVEL(50/60Hz)

Model	Output		Speed (r/min)	Current (A)		Power Factor	Eff (%)	Tstart/Tn	Ist/In	Tmax/Tn	Moment of Inertia kgm ²	WT (Kg)
	kW	HP		380V	400V							
2 poles												
Y2-801-2	0.75	1	2845	1.77	1.69	0.83	77.4	2.2	6.8	2.3	0.0010	18
Y2-802-2	1.1	1.5	2840	2.53	2.40	0.83	79.6	2.2	7.2	2.3	0.0013	20
Y2-90S-2	1.5	2	2840	3.34	3.17	0.84	81.3	2.2	7.5	2.3	0.0020	25
Y2-90L-2	2.2	3	2825	4.73	4.49	0.85	83.2	2.2	7.6	2.3	0.0026	29
Y2-100L-2	3	4	2880	6.19	5.88	0.87	84.6	2.2	8.1	2.3	0.0042	38
Y2-112M-2	4	5.5	2880	8.05	7.65	0.88	85.8	2.2	8.3	2.3	0.0058	50
Y2-132S ₁ -2	5.5	7.5	2915	10.9	10.4	0.88	87.0	2.2	8.3	2.3	0.0128	69
Y2-132S ₂ -2	7.5	10	2915	14.5	13.8	0.89	88.1	2.2	7.7	2.3	0.0151	75
Y2-160M ₁ -2	11	15	2940	21.0	20.0	0.89	89.4	2.2	7.5	2.3	0.0489	100
Y2-160M ₂ -2	15	20	2935	28.4	26.9	0.89	90.3	2.2	7.5	2.3	0.0559	128
Y2-160L-2	18.5	25	2940	34.7	33.0	0.89	90.9	2.2	7.5	2.3	0.0648	142
Y2-180M-2	22	30	2950	41.1	39.1	0.89	91.3	2.2	7.5	2.3	0.0808	176
Y2-200L ₁ -2	30	40	2955	55.7	52.9	0.89	92.0	2.0	7.5	2.3	0.163	250
Y2-200L ₂ -2	37	50	2955	68.3	64.9	0.89	92.5	2.0	7.5	2.3	0.172	258
Y2-225M-2	45	60	2970	82.7	78.6	0.89	92.9	2.0	7.5	2.3	0.302	336
Y2-250M-2	55	75	2970	100.7	95.7	0.89	93.2	2.0	7.5	2.3	0.420	434
Y2-280S-2	75	100	2975	136.5	129.7	0.89	93.8	2.0	7.5	2.3	0.986	525
Y2-280M-2	90	125	2975	163.3	155.1	0.89	94.1	2.0	7.5	2.3	1.04	560
Y2-315S-2	110	150	2975	196.9	187.1	0.90	94.3	1.8	7.1	2.2	1.33	980
Y2-315M-2	132	180	2978	235.6	223.8	0.90	94.6	1.8	7.1	2.2	1.50	1080
Y2-315L ₁ -2	160	220	2978	281.8	267.7	0.91	94.8	1.8	7.1	2.2	1.67	1160
Y2-315L ₂ -2	200	270	2978	351.5	333.9	0.91	95.0	1.8	7.1	2.2	1.88	1190
Y2-355M-2	250	340	2978	439.4	417.4	0.91	95.0	1.6	7.1	2.2	4.02	1810
Y2-355L-2	315	420	2978	553.6	525.9	0.91	95.0	1.6	7.1	2.2	4.86	1950
4 poles												
Y2-802-4	0.75	1	1400	1.91	1.81	0.75	79.6	2.2	6.6	2.2	0.0020	21
Y2-90S-4	1.1	1.5	1390	2.74	2.60	0.75	81.4	2.3	6.8	2.3	0.0030	26
Y2-90L-4	1.5	2	1390	3.67	3.49	0.75	82.8	2.3	7.0	2.3	0.0038	31
Y2-100L ₁ -4	2.2	3	1425	5.02	4.77	0.79	84.3	2.3	7.4	2.3	0.0077	40
Y2-100L ₂ -4	3	4	1430	6.66	6.33	0.80	85.5	2.3	7.4	2.3	0.0093	44
Y2-112M-4	4	5.5	1440	8.77	8.33	0.80	86.6	2.3	7.5	2.3	0.0128	58
Y2-132S-4	5.5	7.5	1450	11.6	11.0	0.82	87.7	2.3	7.8	2.3	0.0285	70
Y2-132M-4	7.5	10	1450	15.5	14.7	0.83	88.7	2.3	7.4	2.3	0.0366	90
Y2-160M-4	11	15	1465	22.2	21.0	0.84	89.8	2.2	7.0	2.3	0.0771	115
Y2-160L-4	15	20	1460	29.6	28.1	0.85	90.6	2.2	7.0	2.3	0.101	120
Y2-180M-4	18.5	25	1470	35.8	34.0	0.86	91.2	2.2	7.5	2.3	0.152	179
Y2-180L-4	22	30	1470	42.4	40.3	0.86	91.6	2.2	7.8	2.3	0.187	194
Y2-200L-4	30	40	1475	57.4	54.6	0.86	92.3	2.2	7.2	2.3	0.285	255
Y2-225S-4	37	50	1480	70.5	67.0	0.86	92.7	2.0	7.4	2.3	0.473	305
Y2-225M-4	45	60	1480	85.4	81.1	0.86	93.1	2.2	7.4	2.3	0.554	342
Y2-250M-4	55	75	1480	103.9	98.7	0.86	93.5	2.0	7.4	2.3	0.751	428
Y2-280S-4	75	100	1485	139.3	132.4	0.87	94.0	2.2	7.2	2.3	1.92	570
Y2-280M-4	90	125	1485	166.9	158.5	0.87	94.2	2.2	7.2	2.3	2.32	655
Y2-315S-4	110	150	1489	201.0	190.9	0.88	94.5	2.1	6.9	2.2	2.34	1000
Y2-315M-4	132	180	1488	240.7	228.6	0.88	94.7	2.1	6.9	2.2	2.58	1100
Y2-315L ₁ -4	160	220	1488	287.8	273.4	0.89	94.9	2.1	6.9	2.2	2.96	1160
Y2-315L ₂ -4	200	270	1487	359.0	341.1	0.89	95.1	2.0	6.9	2.2	3.46	1270
Y2-355M-4	250	340	1490	443.8	421.6	0.90	95.1	2.1	6.9	2.2	6.60	1830
Y2-355L-4	315	420	1490	559.2	531.2	0.90	95.1	2.1	6.9	2.2	7.55	1950

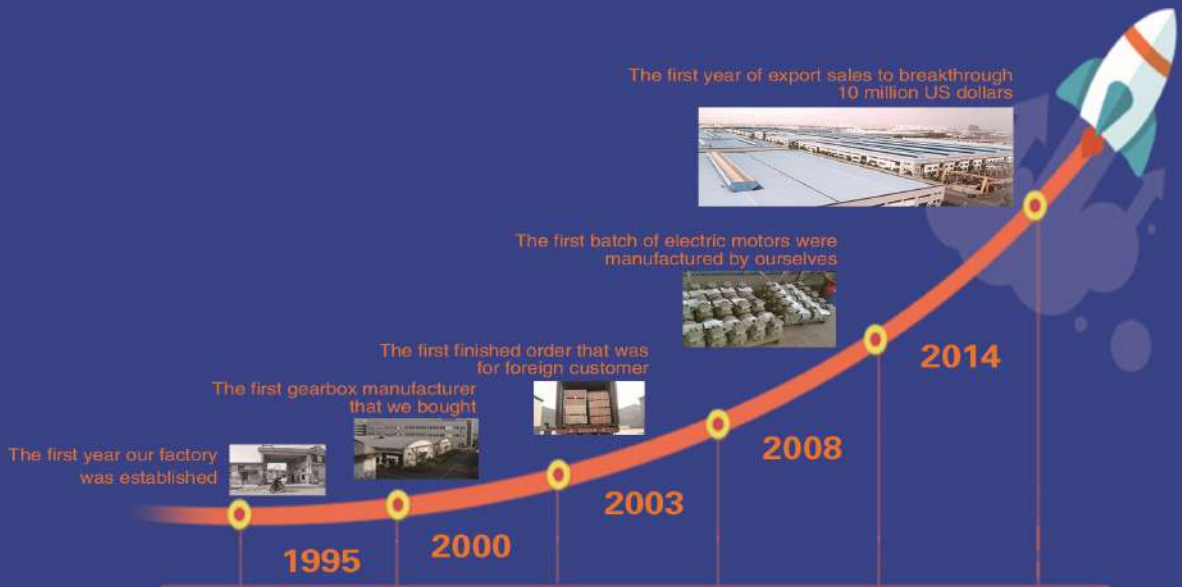
NOMINAL MINIMUM EFFICIENCIES (η) FOR IE2 EFFICIENCY LEVEL(50/60Hz)

Model	Output		Speed (r/min)	Current (A)		Power Factor	Eff (%)	Tstart/Tn	Ist/In	Tmax/Tn	Moment of Inertia kgm ²	WT (Kg)
	kW	HP		380V	400V							
6 poles												
Y2-90S-6	0.75	1	920	2.09	1.98	0.72	75.9	2.0	5.9	2.1	0.0038	23
Y2-90L-6	1.1	1.5	920	2.93	2.78	0.73	78.1	2.0	5.9	2.1	0.0053	29.5
Y2-100L-6	1.5	2	945	3.86	3.67	0.74	79.8	2.0	6.0	2.1	0.0107	37
Y2-112M-6	2.2	3	950	5.52	5.25	0.74	81.8	2.0	6.5	2.1	0.0151	52
Y2-132S-6	3	4	960	7.39	7.02	0.74	83.3	2.1	6.8	2.1	0.0318	67
Y2-132M1-6	4	5.5	965	9.71	9.22	0.74	84.6	2.1	6.9	2.1	0.0394	78
Y2-132M2-6	5.5	7.5	965	13.0	12.3	0.75	86.0	2.1	7.1	2.1	0.0494	87
Y2-160M-6	7.5	10	965	16.8	15.9	0.78	87.2	2.1	6.7	2.1	0.0964	118
Y2-160L-6	11	15	965	24.2	22.9	0.78	88.7	2.0	6.9	2.1	0.127	140
Y2-180L-6	15	20	975	31.4	29.8	0.81	89.7	2.0	7.2	2.1	0.201	185
Y2-200L1-6	18.5	25	980	38.4	36.5	0.81	90.4	2.1	7.2	2.1	0.325	242
Y2-200L2-6	22	30	980	44.8	42.6	0.82	90.9	2.1	7.5	2.1	0.371	258
Y2-225M-6	30	40	985	61.4	58.3	0.81	91.7	2.1	7.1	2.1	0.533	303
Y2-250M-6	37	50	990	72.6	69.0	0.84	92.2	2.1	7.0	2.1	0.877	395
Y2-280S-6	45	60	990	85.8	81.5	0.86	92.7	2.1	7.0	2.0	1.85	493
Y2-280M-6	55	75	990	104.4	99.2	0.86	93.1	2.1	7.0	2.0	2.12	570
Y2-315S-6	75	100	989	143.1	135.9	0.85	93.7	2.0	7.0	2.0	2.61	990
Y2-315M-6	90	125	988	173.2	164.5	0.84	94.0	2.0	7.0	2.0	3.04	1010
Y2-315L1-6	110	150	989	208.5	198.1	0.85	94.3	2.0	6.7	2.0	3.71	1070
Y2-315L2-6	132	180	988	246.5	234.2	0.86	94.6	2.0	6.7	2.0	4.24	1210
Y2-355M1-6	160	220	991	294.8	280.0	0.87	94.8	1.9	6.7	2.0	7.44	1650
Y2-355M2-6	200	270	990	367.7	349.3	0.87	95.0	1.9	6.7	2.0	9.10	1750
Y2-355L-6	250	340	990	459.6	436.6	0.87	95.0	1.9	6.7	2.0	10.8	1850

NOMINAL MINIMUM EFFICIENCIES (η) FOR IE3 EFFICIENCY LEVEL (50/60Hz)

Model	Output		Speed (r/min)	Current (A)		Power Factor	Eff (%)	Tstart/Tn	Ist/In	Tmax/Tn	Moment of Inertia kgm ²
	kW	HP		380V	400V						
2 poles											
Y2-801-2	0.75	1	2845	1.70	1.62	0.83	80.7	2.2	6.8	2.3	0.0010
Y2-802-2	1.1	1.5	2840	2.43	2.31	0.83	82.7	2.2	7.2	2.3	0.0013
Y2-90S-2	1.5	2	2840	3.22	3.06	0.84	84.2	2.2	7.5	2.3	0.0020
Y2-90L-2	2.2	3	2825	4.58	4.35	0.85	85.9	2.2	7.6	2.3	0.0026
Y2-100L-2	3	4	2880	6.02	5.71	0.87	87.1	2.2	8.1	2.3	0.0042
Y2-112M-2	4	5.5	2880	7.84	7.45	0.88	88.1	2.2	8.3	2.3	0.0058
Y2-132S1-2	5.5	7.5	2915	10.6	10.1	0.88	89.2	2.2	8.3	2.3	0.0128
Y2-132S2-2	7.5	10	2915	14.2	13.5	0.89	90.1	2.2	7.7	2.3	0.0151
Y2-160M1-2	11	15	2940	20.6	19.6	0.89	91.2	2.2	7.5	2.3	0.0489
Y2-160M2-2	15	20	2935	27.9	26.5	0.89	91.9	2.2	7.5	2.3	0.0559
Y2-160L-2	18.5	25	2940	34.2	32.5	0.89	92.4	2.2	7.5	2.3	0.0648
Y2-180M-2	22	30	2950	40.5	38.5	0.89	92.7	2.2	7.5	2.3	0.0808
Y2-200L1-2	30	40	2955	54.9	52.1	0.89	93.3	2.0	7.5	2.3	0.163
Y2-200L2-2	37	50	2955	67.4	64.0	0.89	93.7	2.0	7.5	2.3	0.172
Y2-225M-2	45	60	2970	81.7	77.6	0.89	94.0	2.0	7.5	2.3	0.302
Y2-250M-2	55	75	2970	99.6	94.6	0.89	94.3	2.0	7.5	2.3	0.420
Y2-280S-2	75	100	2975	135.2	128.4	0.89	94.7	2.0	7.5	2.3	0.986
Y2-280M-2	90	125	2975	161.7	153.6	0.89	95.0	2.0	7.5	2.3	1.04
Y2-315S-2	110	150	2975	195.1	185.3	0.90	95.2	1.8	7.1	2.2	1.33
Y2-315M-2	132	180	2978	233.6	221.9	0.90	95.4	1.8	7.1	2.2	1.50
Y2-315L1-2	160	220	2978	279.4	265.5	0.91	95.6	1.8	7.1	2.2	1.67
Y2-315L2-2	200	270	2978	348.6	331.1	0.91	95.8	1.8	7.1	2.2	1.88
Y2-355M-2	250	340	2978	435.7	413.9	0.91	95.8	1.6	7.1	2.2	4.02
Y2-355L-2	315	420	2978	549.0	521.5	0.91	95.8	1.6	7.1	2.2	4.86
4 poles											
Y2-802-4	0.75	1	1400	1.84	1.75	0.75	82.5	2.2	6.6	2.2	0.0020
Y2-90S-4	1.1	1.5	1390	2.65	2.52	0.75	84.1	2.3	6.8	2.3	0.0030
Y2-90L-4	1.5	2	1390	3.56	3.38	0.75	85.3	2.3	7.0	2.3	0.0038
Y2-100L1-4	2.2	3	1425	4.88	4.64	0.79	86.7	2.3	7.4	2.3	0.0077
Y2-100L2-4	3	4	1430	6.50	6.17	0.80	87.7	2.3	7.4	2.3	0.0093
Y2-112M-4	4	5.5	1440	8.57	8.15	0.80	88.6	2.3	7.5	2.3	0.0128
Y2-132S-4	5.5	7.5	1450	11.4	10.8	0.82	89.6	2.3	7.8	2.3	0.0285
Y2-132M-4	7.5	10	1450	15.2	14.4	0.83	90.4	2.3	7.4	2.3	0.0366
Y2-160M-4	11	15	1465	21.8	20.7	0.84	91.4	2.2	7.0	2.3	0.0771
Y2-160L-4	15	20	1460	29.1	27.7	0.85	92.1	2.2	7.0	2.3	0.101
Y2-180M-4	18.5	25	1470	35.3	33.5	0.86	92.6	2.2	7.5	2.3	0.152
Y2-180L-4	22	30	1470	41.8	39.7	0.86	93.0	2.2	7.8	2.3	0.187
Y2-200L-4	30	40	1475	56.6	53.8	0.86	93.6	2.2	7.2	2.3	0.285
Y2-225S-4	37	50	1480	69.6	66.1	0.86	93.9	2.0	7.4	2.3	0.473
Y2-225M-4	45	60	1480	84.4	80.2	0.86	94.2	2.2	7.4	2.3	0.554
Y2-250M-4	55	75	1480	102.7	97.6	0.86	94.6	2.0	7.4	2.3	0.751
Y2-280S-4	75	100	1485	137.9	131.0	0.87	95.0	2.2	7.2	2.3	1.92
Y2-280M-4	90	125	1485	165.1	156.8	0.87	95.2	2.2	7.2	2.3	2.32
Y2-315S-4	110	150	1489	199.1	189.1	0.88	95.4	2.1	6.9	2.2	2.34
Y2-315M-4	132	180	1488	238.4	226.5	0.88	95.6	2.1	6.9	2.2	2.58
Y2-315L1-4	160	220	1488	285.1	270.9	0.89	95.8	2.1	6.9	2.2	2.96
Y2-315L2-4	200	270	1487	355.7	337.9	0.89	96.0	2.0	6.9	2.2	3.46
Y2-355M-4	250	340	1490	439.6	417.7	0.90	96.0	2.1	6.9	2.2	6.60
Y2-355L-4	315	420	1490	553.9	526.2	0.90	96.0	2.1	6.9	2.2	7.55
6 poles											
Y2-90S-6	0.75	1	920	2.01	1.91	0.72	78.9	2.0	5.9	2.1	0.0038
Y2-90L-6	1.1	1.5	920	2.83	2.69	0.73	81.0	2.0	5.9	2.1	0.0053
Y2-100L-6	1.5	2	945	3.73	3.55	0.74	82.5	2.0	6.0	2.1	0.0107
Y2-112M-6	2.2	3	950	5.36	5.09	0.74	84.3	2.0	6.5	2.1	0.0151
Y2-132S-6	3	4	960	7.20	6.84	0.74	85.6	2.1	6.8	2.1	0.0318
Y2-132M1-6	4	5.5	965	9.46	8.99	0.74	86.8	2.1	6.9	2.1	0.0394
Y2-132M2-6	5.5	7.5	965	12.7	12.0	0.75	88.0	2.1	7.1	2.1	0.0494
Y2-160M-6	7.5	10	965	16.4	15.6	0.78	89.1	2.1	6.7	2.1	0.0964
Y2-160L-6	11	15	965	23.7	22.5	0.78	90.3	2.0	6.9	2.1	0.127
Y2-180L-6	15	20	975	30.9	29.3	0.81	91.2	2.0	7.2	2.1	0.201
Y2-200L1-6	18.5	25	980	37.8	36.0	0.81	91.7	2.1	7.2	2.1	0.325
Y2-200L2-6	22	30	980	44.2	42.0	0.82	92.2	2.1	7.5	2.1	0.371
Y2-225M-6	30	40	985	60.6	57.5	0.81	92.9	2.1	7.1	2.1	0.533
Y2-250M-6	37	50	990	71.7	68.1	0.84	93.3	2.1	7.0	2.1	0.877
Y2-280S-6	45	60	990	84.8	80.6	0.86	93.7	2.1	7.0	2.0	1.85
Y2-280M-6	55	75	990	103.3	98.1	0.86	94.1	2.1	7.0	2.0	2.12
Y2-315S-6	75	100	989	141.7	134.6	0.85	94.6	2.0	7.0	2.0	2.61
Y2-315M-6	90	125	988	171.5	163.0	0.84	94.9	2.0	7.0	2.0	3.04
Y2-315L1-6	110	150	989	206.8	196.4	0.85	95.1	2.0	6.7	2.0	3.71
Y2-315L2-6	132	180	988	244.5	232.2	0.86	95.4	2.0	6.7	2.0	4.24
Y2-355M1-6	160	220	991	292.3	277.7	0.87	95.6	1.9	6.7	2.0	7.44
Y2-355M2-6	200	270	990	364.6	346.4	0.87	95.8	1.9	6.7	2.0	9.10
Y2-355L-6	250	340	990	455.7	433.0	0.87	95.8	1.9	6.7	2.0	10.8

Always chase the first since 1995



Tel: +86-535-6330966

Mobile: +86-18563806647

E-mail: info@sogears.com

Viber/Line/Whatsapp/Wechat: 008618563806647

Web: www.sogears.com (Skype: qingdao411)

Headquarters Address: Wujin, Changzhou City, Jiangsu Province, China